

| | |
|-------------|-----------|
| Project | Catalog # |
| Distributor | Type |
| Prepared by | Date |



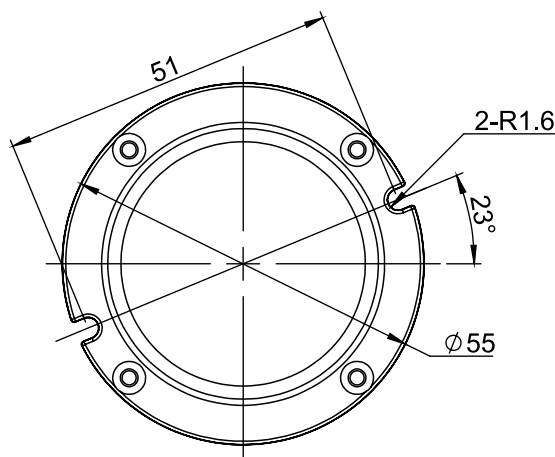
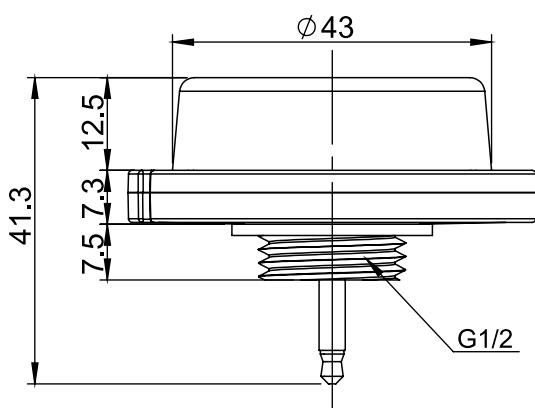
Compact Bi-Level High Bay Microwave Sensor

T1-SS254T

The **T1-SS254T** uses microwave sensing technology that reacts to changes in movement within the coverage area. Its slim low-profile is designed to be installed at the bottom of a light fixture's body with no obstructions for it to detect motion directly from the sensor's line of sight. Once the sensor stops detecting movement and the time delay elapses, the lights will dim from high to low mode and eventually to the OFF position based on the settings.

SPECS

| | | | |
|---------------------------|------------------------------------|------------------------|--|
| Operating Voltage | 12V-24 VDC, >50mA | Mounting Height | Max 40ft. (12 meters) |
| Dim Control Output | 0-10V Max. 25mA sinking current | Time Setting | 10s / 1min / 5min / 10min / 15min / 20min / 30min / 80min |
| HF System | 5.8GHz+75MHZ | Light-Control | 24H / 10Lux / 30Lux / 50Lux |
| Transmission Power | <0.2mW | Temperature | -40°F ~ +158°F (-40°C ~ +70°C) |
| Detection Radius | 20% / 50% / 75% / 100% (1-8m) | IP Rating | IP65 |
| | | Warranty | Five Year Warranty |



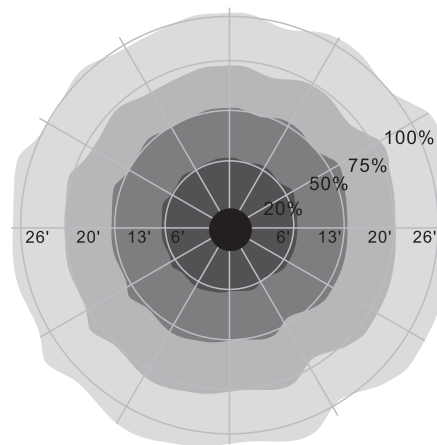
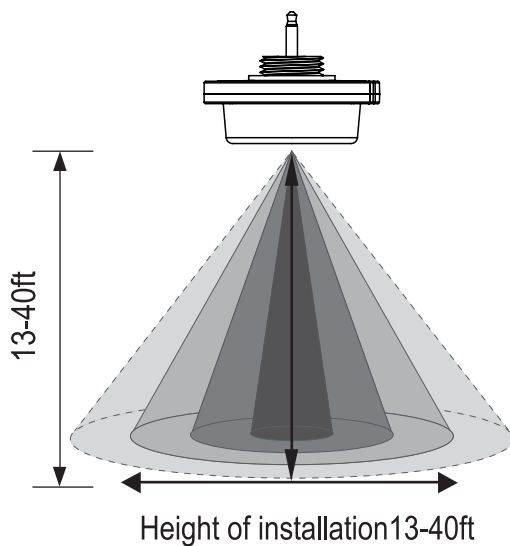
DIMENSIONS

⚠ WARNING

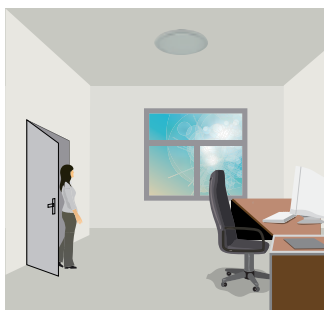
NOTE: Warm-up time is 15 seconds.
After the sensor connects, the light will keep ON for 15 seconds then go to regular dimming mode.

NOTE: Factory Default Setting:
100% Sensitivity
Hold On Time: 5 min
Daylight Sensor: ☀
Dimming Level 30%
Dimming Time: 60 minutes.

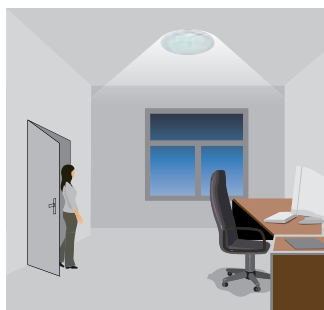
NOTE: The LED light will blink as a confirmation of current settings.



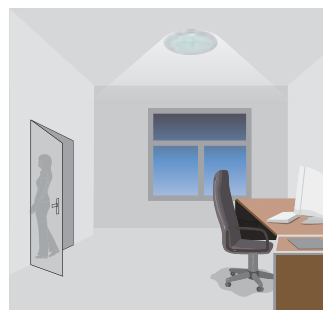
The microwave sensor offers 3 levels of light: 100%-->dimming light (when ambient light is insufficient)-->OFF, and 2 periods of selectable waiting time: motion hold time and stand-by period. Daylight threshold and freedom of detection area are selectable.



With sufficient ambient light, the light does not switch ON with the presence of motion.



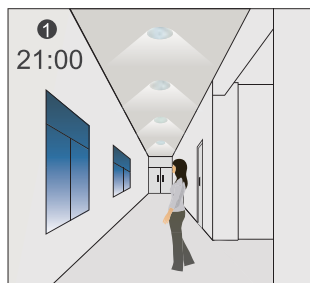
With insufficient ambient light, the sensor switches ON the light automatically with the presence of motion.



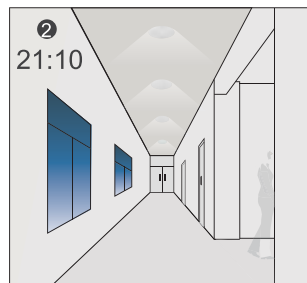
After hold time has elapsed, the light dims to stand-by level if the surrounding ambient light is below the daylight threshold.



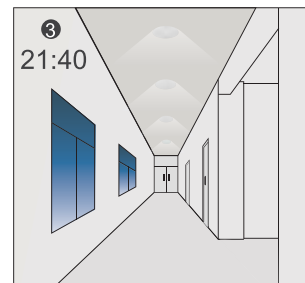
Light switches OFF automatically after the stand-by period has elapsed.



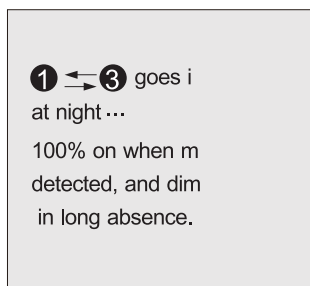
The light switches ON at 100% when there is movement detected.



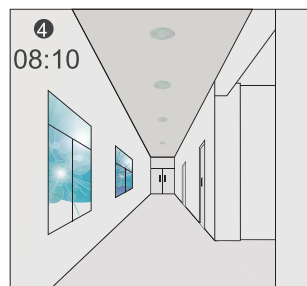
The light dims to stand-by level after the hold-time.



The light remains at dimming level at night.



① ↔ ③ goes i
at night ...
100% on when m
detected, and dim
in long absence.



When the ambient light exceeds set point off to light, the light will turn OFF even if when the space is occupied.



The light automatically turns ON at 10% when ambient light is insufficient (no motion).

* Settings on this demonstration:

Hold-time: 30min

Setpoint on: 50lux

Setpoint off: 300lux

Stand-by Dim: 10%

Stand-by period: +∞

(When the smart photocell sensor open, the stand-by time is only +∞)

