

Project	Catalog #
Distributor	Type
Prepared by	Date

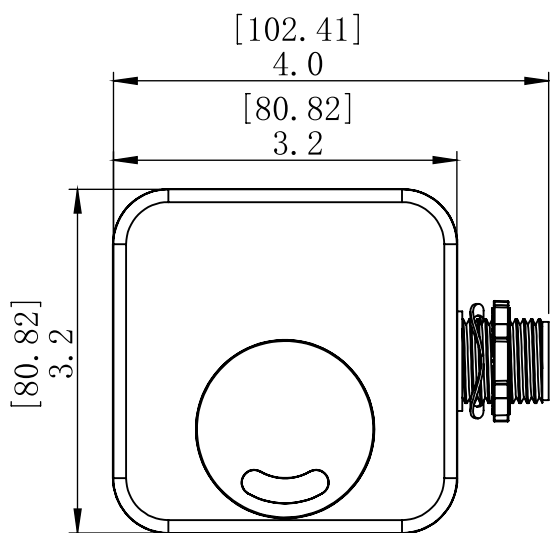


Bi-Level Low Bay Microwave Sensor T1-SS119-MIC-ON-OFF

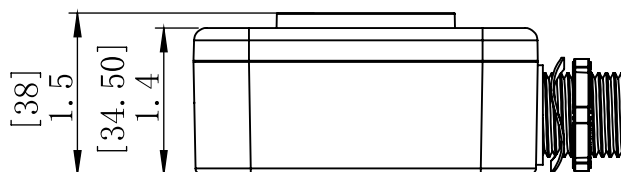
The **T1-SS119-MIC-ON-OFF** is a microwave (MIC) sensor that mounts in an indoor lighting fixture and provides multi-level control based on motion. It controls 0-10VDC LED drivers or dimming ballasts. All parameters are adjustable via wireless remote capable of storing and transmitting sensor profiles.

SPECS

Operating Voltage	120/277 VAC, 50Hz/60Hz	Dim Control Output	0-10V. Max. 25mA sinking current
Maximum Load	Resistive/Halogen - 800W@120V / 1200W@277V Fluorescent Ballast - 660W@120V / 1200W@277V Electronic Ballast (LED/CFL) - 5A@120V / 5A@277V	Detection Radius	24ft
		Detection Angle	360°
		Mounting Height	Max. 20ft
		Time Setting	10sec.-15min. (adjustable)
		Light Control	10-2000Lux (adjustable)
		Humidity	Max. 95% RH
HF System	5.8GHz CW	Temperature	-40°F ~ +158°F (-40°C ~ +70°C)
		Warranty	Five Year Warranty



Unit : mm/in



⚠ WARNING

NOTE: Warm-up time is 15 seconds the first time. After the sensor connects, the light will turn on for 15 seconds.

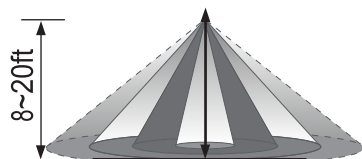
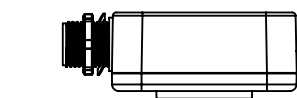
NOTE: Factory default setting: 100% sensitivity.

Hold On Time: 10sec

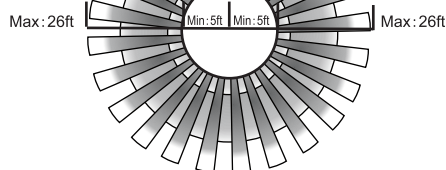
Daylight Sensor: disabled

NOTE: The LED set light will blink as a confirmation that the setting has been changed on the DIP switch.

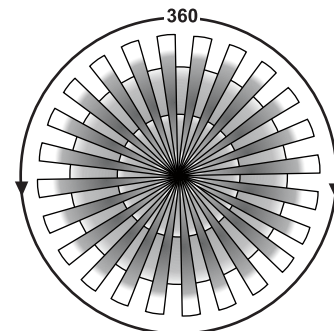
DIMENSIONS



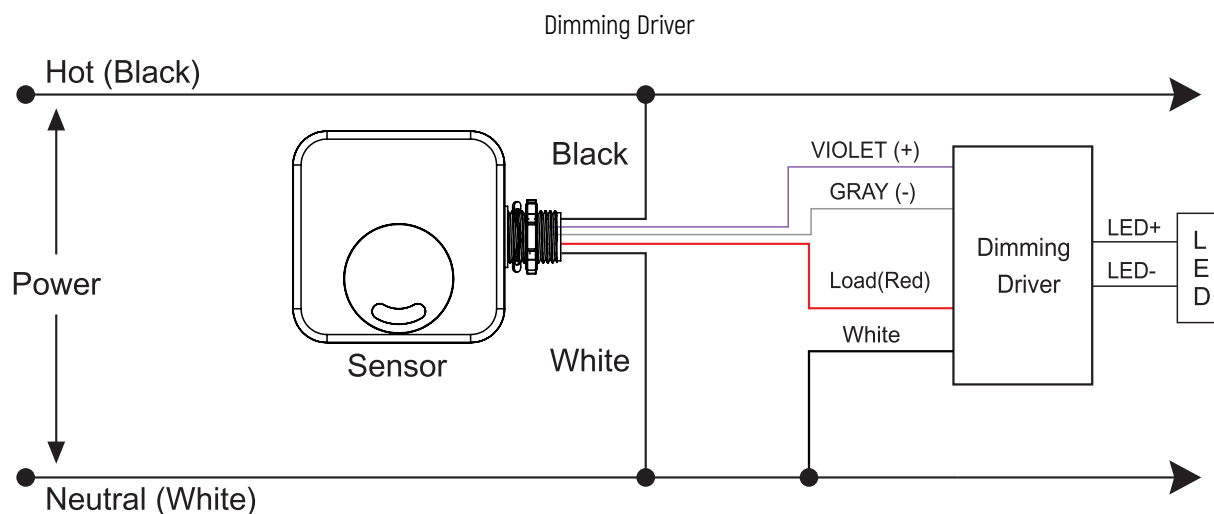
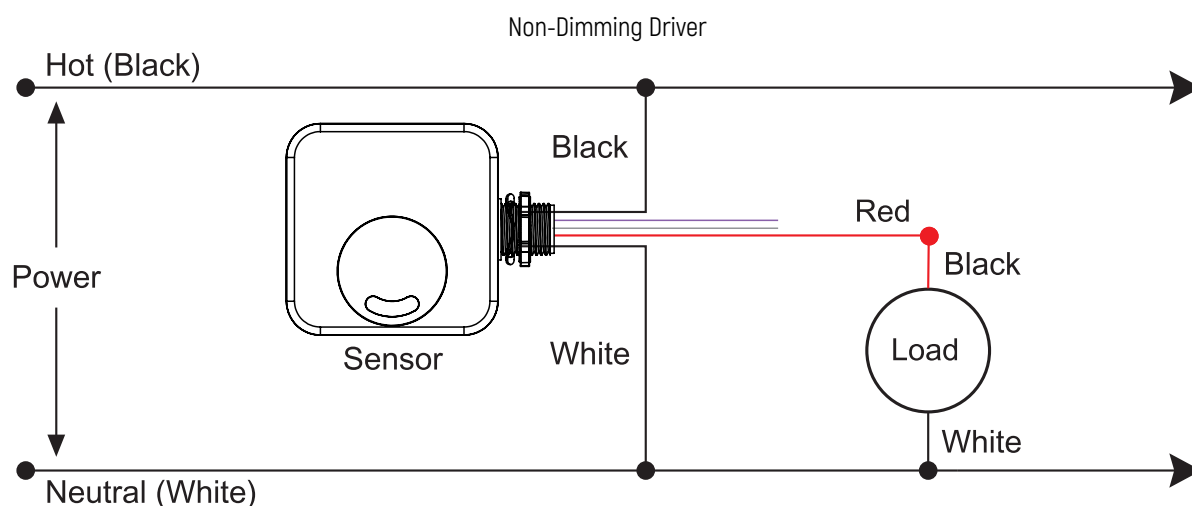
Height of installation 8~20ft



(Height of installation 8ft)
Detection range

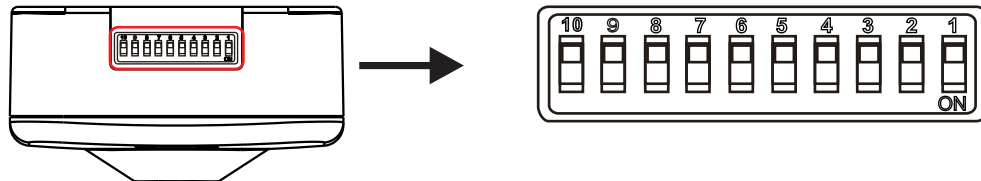


Detection angel



SHOW ON THE DIAGRAM

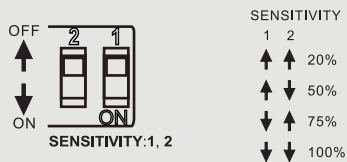
Use 1, 2 to set detection sensitivity; 3, 4 to set hold time; 5, 6 to set lux, 7, 8 to set stand-by light level; and 9, 10 to set stand-by time.



DETECTION RANGE SETTING

Detection range is the term used to describe the radius of the circular detection zone at a height of 50ft. Pull switch to the OFF position as "↑", pull switch to the ON position as "↓".

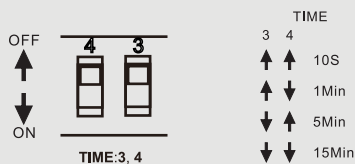
See diagram below to adjust to the desired sensitivity.



HOLD TIME SETTING

The light can be set to stay ON between approximately 10sec to a maximum of 30min. Any movement detected before this time elapses will restart the timer. It is recommended to select the shortest time for adjusting the detection zone and for performing a walk test. Pull switch to the OFF position as "↑", pull switch to the ON position as "↓".

See diagram below to adjust to the desired hold time.



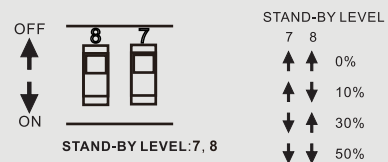
LIGHT-CONTROL SETTING

The selected light-control threshold can be set from 10lux to 50lux. Pull switch to the OFF position as "↑", pull switch to the ON position as "↓". See diagram below to adjust light control.



STAND-BY LIGHT LEVEL SETTING

See diagram below to adjust the stand-by light level.



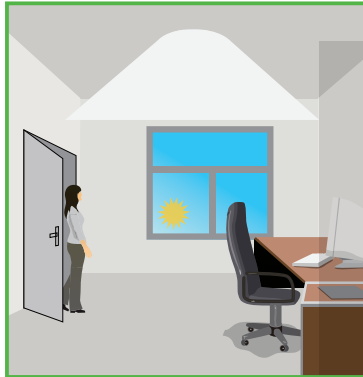
STAND-BY LIGHT TIME SETTING

See diagram below to adjust the stand-by light level.

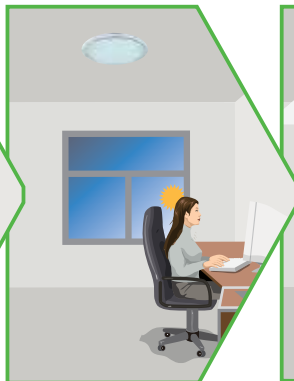
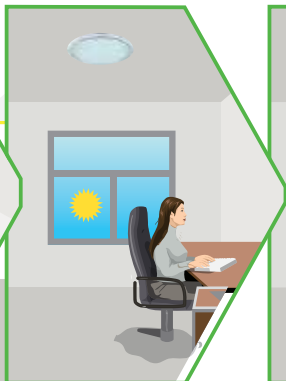




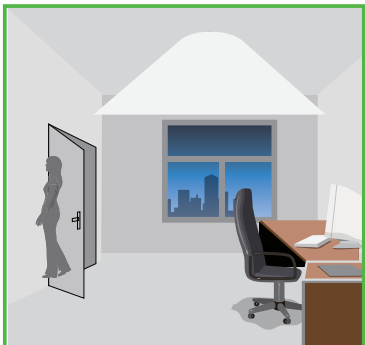
The light will not switch ON when ambient light is sufficient, even if there is motion detected.



The light will switch ON automatically with motion detection during when ambient light is insufficient.



The light turns ON at full, or dims to maintain the lux level. The light output regulates according to the level of natural light available.



The light dims to stand-by period after hold time has elapsed and stays on the selected minimum dimming level.



The light switches OFF completely after the stand-by period has elapsed.